

Name \_\_\_\_\_

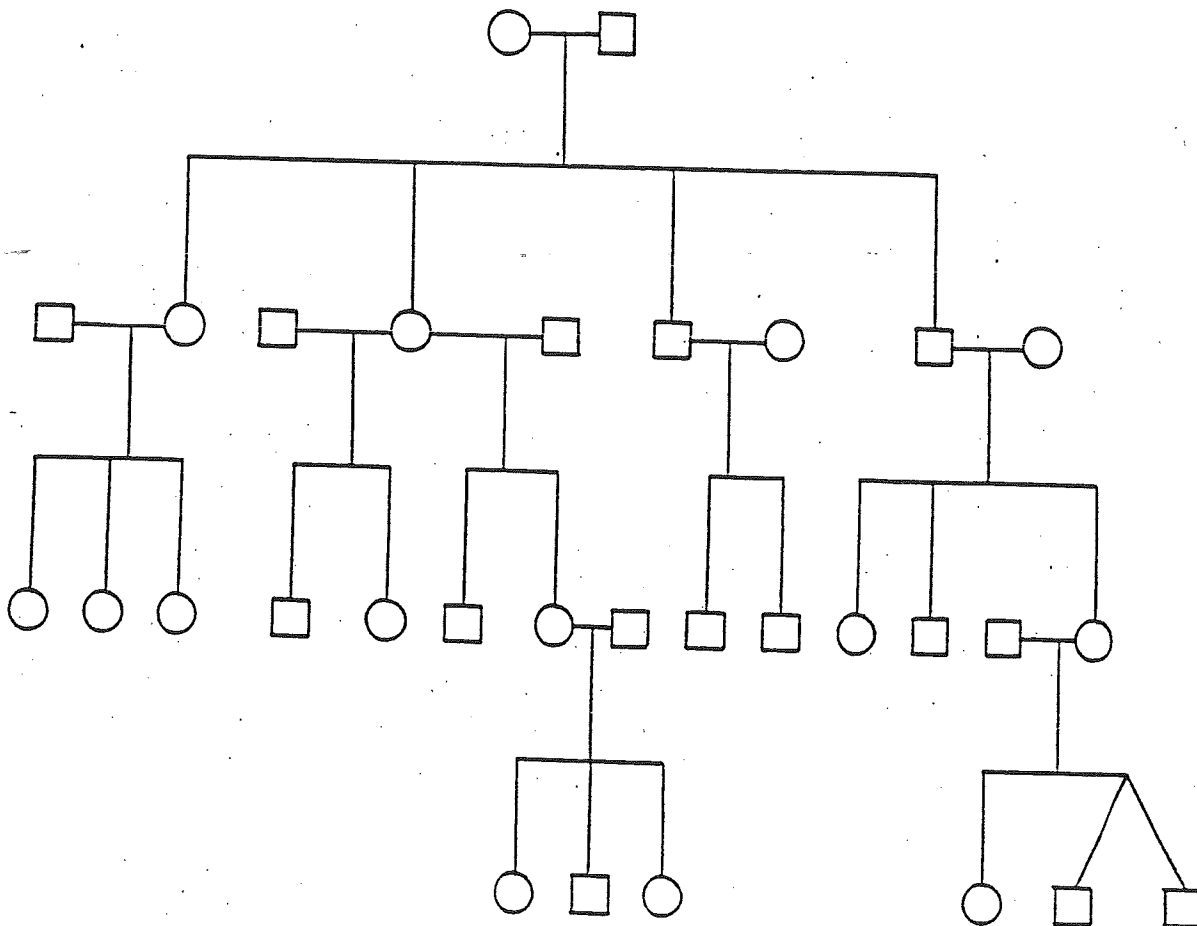
Date \_\_\_\_\_



Cranial Creation #10

# PEDIGREE CHART ASSIGNMENT

*Sample Blank Chart*



Cranial Creation #10

## PEDIGREE CHART ASSIGNMENT

(continued)



### General Pedigree Chart Instructions

Your task is to draw a "family tree" or "pedigree chart" for the O'Smithsteinski and Akim-Garcia-Chan families whose stories follow this explanation. The actual chart must be on 8½ x 14-inch paper. Each person must be represented by the proper shape (i.e., boys = boxes, girls = circles). For each generation, put the oldest person to the left. As you move to the right, each person on the chart should be younger (or perhaps the same age) as the person to his or her immediate left.





Marriages and offspring must be accurately indicated by appropriate lines, so you will need to pay attention in class. Put each person's name *under* his or her symbol along with the year of birth.

The layout of your chart is to be neat and accurate. Lines, squares, and circles are to be sharply defined and correctly positioned according to the specific instructions which follow. For example, a good way to lose the partial credit on this part of the assignment is to have two uncles married and producing offspring.

Please do a good job. We think you will find the experience a valuable one. You must also be neat because you will be using your chart in a cooperative group.

### How to Make a Pedigree Chart

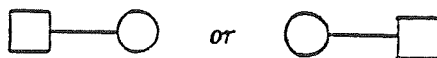
#### SYMBOLS

1. Boxes represent males.  
2. Circles represent females.  

*Note:* Filled-in squares and circles indicate particular traits expressed in those individuals.

#### RELATIONSHIPS

3. A horizontal line connecting a male and female indicates a mating.





Cranial Creation #10

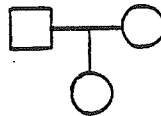
## PEDIGREE CHART ASSIGNMENT

(continued)

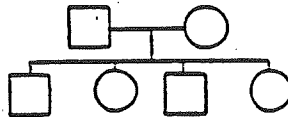
### General Pedigree Chart Instructions (continued)

#### RELATIONSHIPS (continued)

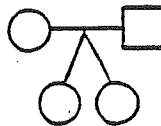
- A. A vertical line from this type of horizontal line indicates offspring.



- B. If there are several offspring, indicate this by a second horizontal line with a vertical line extending from it for each offspring.

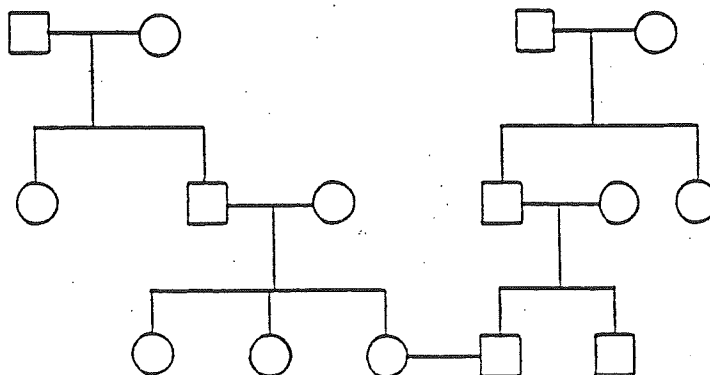


4. Twins are indicated as shown below.

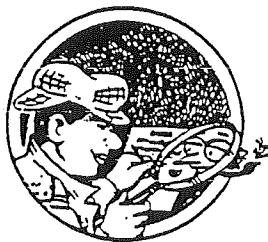


Space the offspring at equal distances along this second horizontal line for neatness.

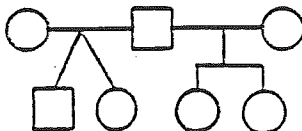
Where two families intermarry, the corresponding generations should always be in line with each other.



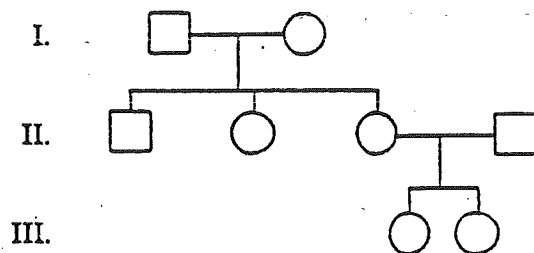
Cranial Creation #10

**PEDIGREE CHART ASSIGNMENT***(continued)**General Pedigree Chart Instructions (continued)*

If there has been a divorce or other circumstance which has produced a person with multiple spouses, the chart is completed as shown below.



Generations should be numbered at the left of the chart. This simplifies any explanations you will make.



Now read the story which follows and use the people in the story as the symbols on the pedigree chart you are to make.

Welcome to the O'Smithsteinski/Akim-Garcia-Chan clan!



Cranial Creation #10

## PEDIGREE CHART ASSIGNMENT

(continued)

### Story

This is the story of two families—the O'SMITHSTEINSKIs and the AKIM-GARCIA-CHANS. These two groups began their common lines of inheritance back in the sputnik-scare year of 1960 when WANDA AKIM-GARCIA-CHAN married HEINRIK O'SMITHSTEINSKI after a Civil Defense presentation on "Building the Perfect Bomb Shelter."

HEINRIK O'SMITHSTEINSKI was the baby in a family of three boys and two girls. His oldest sister, ANNETTE, was born in 1935. ROWENA, another sister, followed in 1936. IGOR came along in 1937. BILLY-JOE was next in 1938. HEINRIK rounded out the family in 1939.

Yes, Papa STU O'SMITHSTEINSKI (b. 1910) and Mama MANDY (b. 1909) had a brood to be proud of. Of course, as time passed, their brood enlarged. Marriages and births of cousins, nephews, grandchildren, etc., added a host of new folks to the extended family.

CARLO MANETTI (b. 1934) married ANNETTE. Their family unit grew as follows:

Carol—1956 ♀

Mafalda—1957 ♀

Yolanda—1958 ♀

ROWENA was twice married. Her first husband was GREG GAMBOA (b. 1935). Their children included:

Antonio—1958 ♂

Heather—1959 ♀

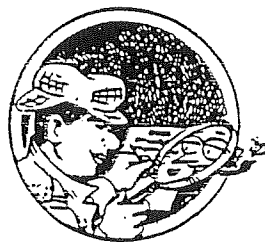
ROWENA's second husband, and only true love, was SIR CHARLES EVERTON REMINGTON. This union was blessed with two lovely children:

Henri—1960 ♂ (January)

Tami—1960 (December) ♀

Cranial Creation #10

# PEDIGREE CHART ASSIGNMENT (continued)



IGOR married MELISSA MONTGOMERY. Children of this marriage:

Pat—1960 ♂

Mike—1961 ♂

BILLY-JOE and his sweet PENELOPE PASTRANA produced three fine offspring:

Brianne—1959 ♀

Irwin—1960 ♂

Sue—1961 ♀

HEINRIK, of course, married WANDA AKIM-GARCIA-CHAN. Their family increased the world population by four:

Burdella—1961 ♀

Walter—1962 ♂

Grantland—1963 ♂

Sophia—1964 ♀

Nephews and nieces of HEINRIK, on his side of the family, continued the growth of the clan in the 1980s. TAMI REMMINGTON married JIMY BACKER. Their children were:

Hannah—1981 ♀

Amer—1982 ♂

Fifi—1983 ♀

SUE O'SMITHSTEINSKI married VLADIMIR VOLKONOFF. The little VOLKONOFFs were:

Kuma—1983 ♂

Wisam ♂ and Nanook ♂ (Twins!)—1984



Cranial Creation #10

## PEDIGREE CHART ASSIGNMENT

(continued)

Meanwhile, on the other side of the family . . .

WANDA AKIM-GARCIA-CHAN, the oldest child of NIGEL (b. 1910) and ETHEL (b. 1912) AKIM-GARCIA-CHAN, had three brothers and two sisters. WANDA was born in 1936. Her brother ALFRED was born in 1937. The twins, LUCILLE and FRANCHESCA, arrived, 15 minutes apart, in 1938. Brother RAUL entered the world in 1939. And WANDA's little brother, SPUD, began life in 1940.

WANDA, as you should recall, married HEINRIK O'SMITHSTEINSKI and their family increased the world population by four:

Burdella—1961 ♀

Walter—1962 ♂

Grantland—1963 ♂

Sophia—1964 ♀

ALFRED scandalously married twice. His first wife was LIN SU WONG. Two children were the result of this first marriage:

Sung Lee—1958 ♀

Maria—1959 ♀

ALFRED ran off in 1960 with the voluptuous and enticing ETHERIA ELOPER. The only known offspring of this blight on the family (ALFRED has not been in contact with any relative since 1961) is:

Bernita ♀

LUCILLE, in the first thing she ever did without her twin sister, married HABIB ABDULLAH. Rather prolifically, this pair produced four children:

Hank—1959 ♂

Luann ♀ and Leanne ♀ (Identical twins!!)—1960

Benito—1961 ♂

Cranial Creation #10

## PEDIGREE CHART ASSIGNMENT

(continued)



FRANCESCA, LUCILLE's twin, was crushed that her sister would leave her side for a *man*. She vowed never to betray herself in that manner. To this day she has never married.

RAUL married CONSTANCE MACDOWELL. A girl and a boy were the results of this pairing:

Nancy—1959 ♀

Hector—1960 ♂

SPUD was fortunate to find and woo FANNY FULBRIGHT. Children soon blessed this union:

Xi-Pang (a boy)—1962 ♂

Daria—1964 ♀

Kim (a girl)—1964 ♀

WANDA's family also grew with the addition of nieces and nephews on her side. These included quite a crew. HANK ABDULLAH married dear DARCHELLE MELBERG (b. 1958). Little darlings brought into the world by this duo were:

Luigi—1981 ♂

Aurora—1982 ♀

Hulger—1983 ♂

Leanaura—1984 ♀

NANCY married RON RAYGUN. Four children now fill their house with noise:

Rose ♀ and Petunia ♀ (Identical twins!!)—1981

TAKAHIRO—1982 ♂

EMIL—1983 ♂